

THE AVENUE PLAN

The Coalition supports life saving improvements including:

- New traffic signals
- ADA curb cuts
- High visibility crosswalks

at five priority locations:

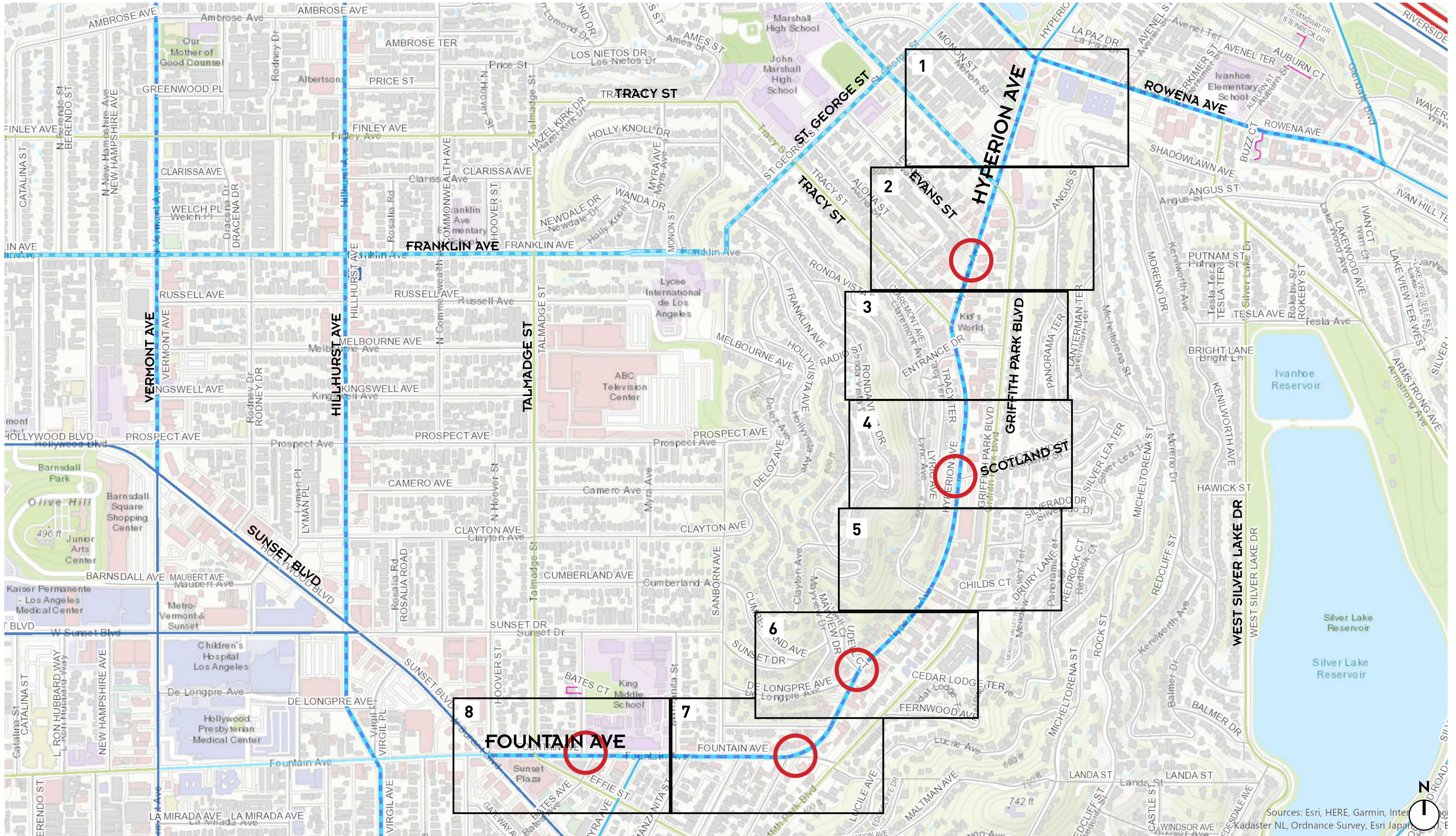
1. Hyperion/Evans
2. Hyperion/Scotland
3. Hyperion/Delongpre
4. Hyperion/Fountain
5. Fountain/Bates

LEGEND

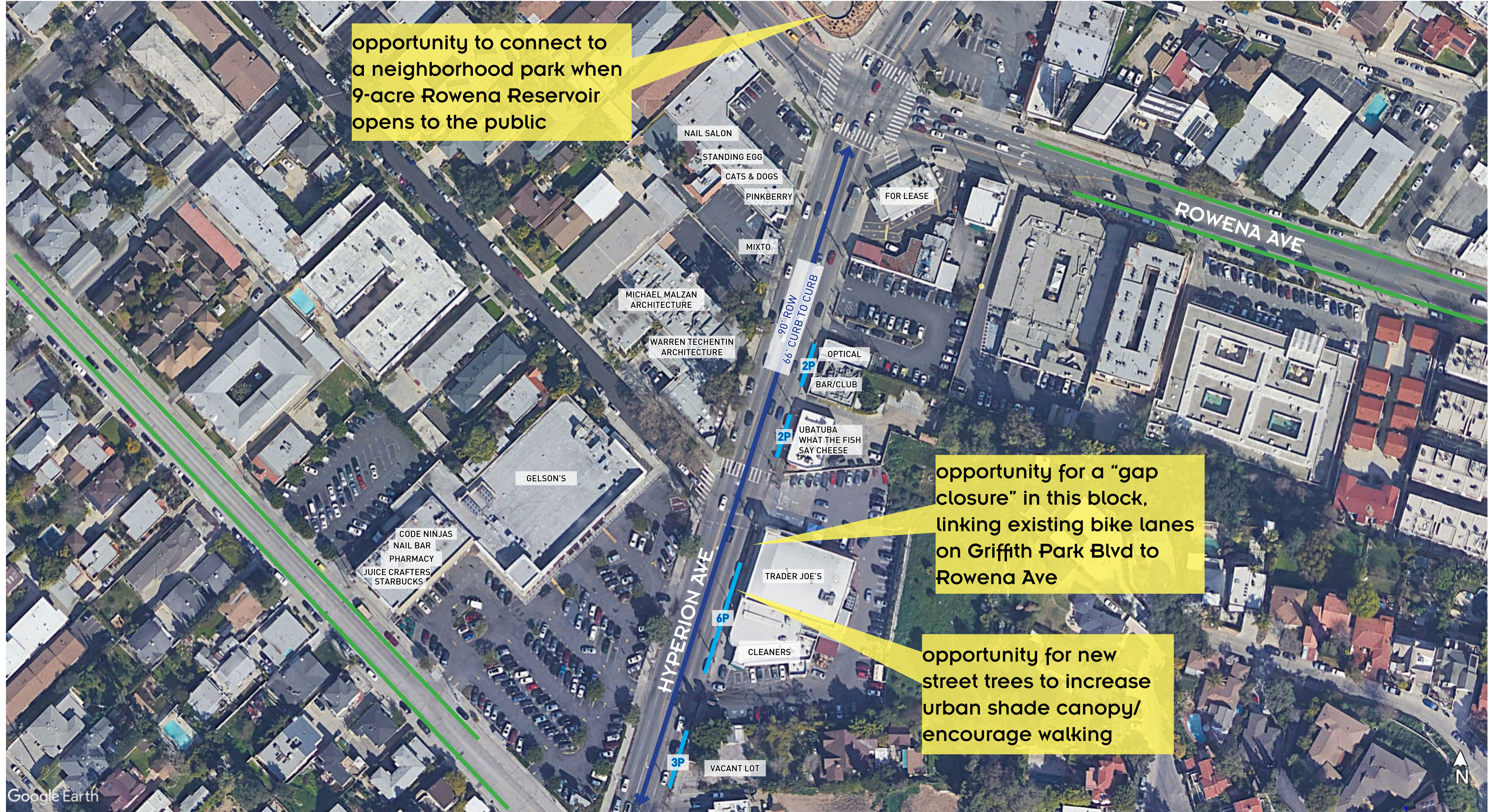
- ↔ Project Area
- Priority Crossing Location
- - - 1/2-Mile Buffer (10-minute walk zone)
- Fountain High-Injury Network
- Metro B (Red) Line
- Metro Bus Line
- Glendale Metrolink Station
- LADOT DASH Line
- LA River Greenway
- Bike Lane
- Metro Bikeshare Station
- Commercially Zoned Space
- Industrial and Studio Space
- Schools and Public Facilities



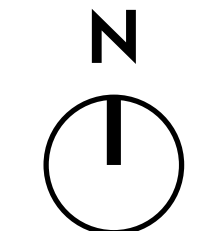
THE AVENUE PLAN - Key Map



THE AVENUE PLAN - Panel 1



| LEGEND | | | |
|--------|------------------------------|--|---------------------------|
| | School Entrance | | ADA curb cut |
| | Retired bus stop/line | | Traffic Violence |
| | Potential sidewalk extension | | Existing curbside parking |
| | Yellow curb | | Red curb |
| | DESIGNATED ROW WIDTH | | Existing bike lane |
| | Safe Crossing Priority | | |

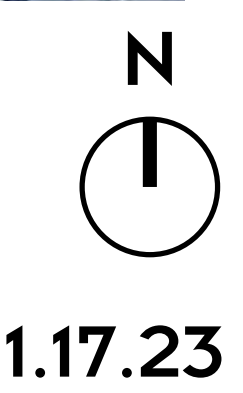


THE AVENUE PLAN - Panel 2



ISSUES & OPPORTUNITIES
Hyperion Street Safety Coalition

| LEGEND | | | |
|--------|------------------------------|--|------------------------|
| | School Entrance | | ADA curb cut |
| | Retired bus stop/line | | Traffic Violence |
| | Potential sidewalk extension | | Priority ADA hazard |
| | Existing curbside parking | | Yellow curb |
| | Existing bike lane | | Red curb |
| | DESIGNATED ROW WIDTH | | Safe Crossing Priority |
| | DESIGNATED ROADWAY WIDTH | | |



THE AVENUE PLAN - Panel 3



ISSUES & OPPORTUNITIES
Hyperion Street Safety Coalition

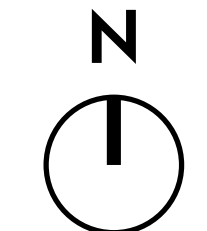
| LEGEND | | | |
|--------|------------------------------|--|--|
| | School Entrance | | ADA curb cut |
| | Retired bus stop/line | | Traffic Violence |
| | Potential sidewalk extension | | Priority ADA hazard |
| | Existing curbside parking | | Red curb |
| | Yellow curb | | DESIGNATED ROW WIDTH DESIGNATED ROADWAY WIDTH |
| | Red curb | | Existing bike lane |
| | Safe Crossing Priority | | N |

THE AVENUE PLAN - Panel 4



ISSUES & OPPORTUNITIES
Hyperion Street Safety Coalition

| LEGEND | | | |
|--------|--|--|------------------------------|
| | School Entrance | | ADA curb cut |
| | Retired bus stop/line | | Priority ADA hazard |
| | Traffic Violence | | Potential sidewalk extension |
| | DESIGNATED ROW WIDTH DESIGNATED ROADWAY WIDTH | | Existing curbside parking |
| | Existing bike lane | | Yellow curb |
| | Red curb | | Safe Crossing Priority |



THE AVENUE PLAN - Panel 5

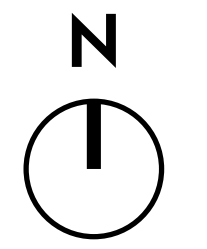


high speeds build up on downhill curvature in southbound direction // jaywalking issue since no crosswalks or signals in this 1/3-mile segment ⚠️

intersection issues:

- long wait at pedestrian crossing
- non-ADA crossings
- curb cuts not aligned with crosswalks
- unreachable beg buttons
- jogged intersection
- vehicles blow the light here due to high speeds ⚠️

| LEGEND | | | |
|--------|--|--|------------------------------|
| | School Entrance | | ADA curb cut |
| | Retired bus stop/line | | Priority ADA hazard |
| | Traffic Violence | | Potential sidewalk extension |
| | DESIGNATED ROW WIDTH DESIGNATED ROADWAY WIDTH | | Existing curbside parking |
| | Existing bike lane | | Yellow curb |
| | Red curb | | Safe Crossing Priority |

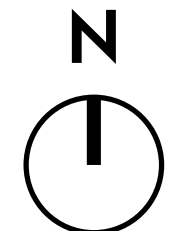


Hyperion/Fountain - Panel 6



ISSUES & OPPORTUNITIES
Hyperion Street Safety Coalition

| LEGEND | | | |
|--------|------------------------------|--|--|
| | School Entrance | | ADA curb cut |
| | Retired bus stop/line | | Traffic Violence |
| | Potential sidewalk extension | | DESIGNATED ROW WIDTH DESIGNATED ROADWAY WIDTH |
| | Existing curbside parking | | Existing bike lane |
| | Yellow curb | | Safe Crossing Priority |
| | Red curb | | |



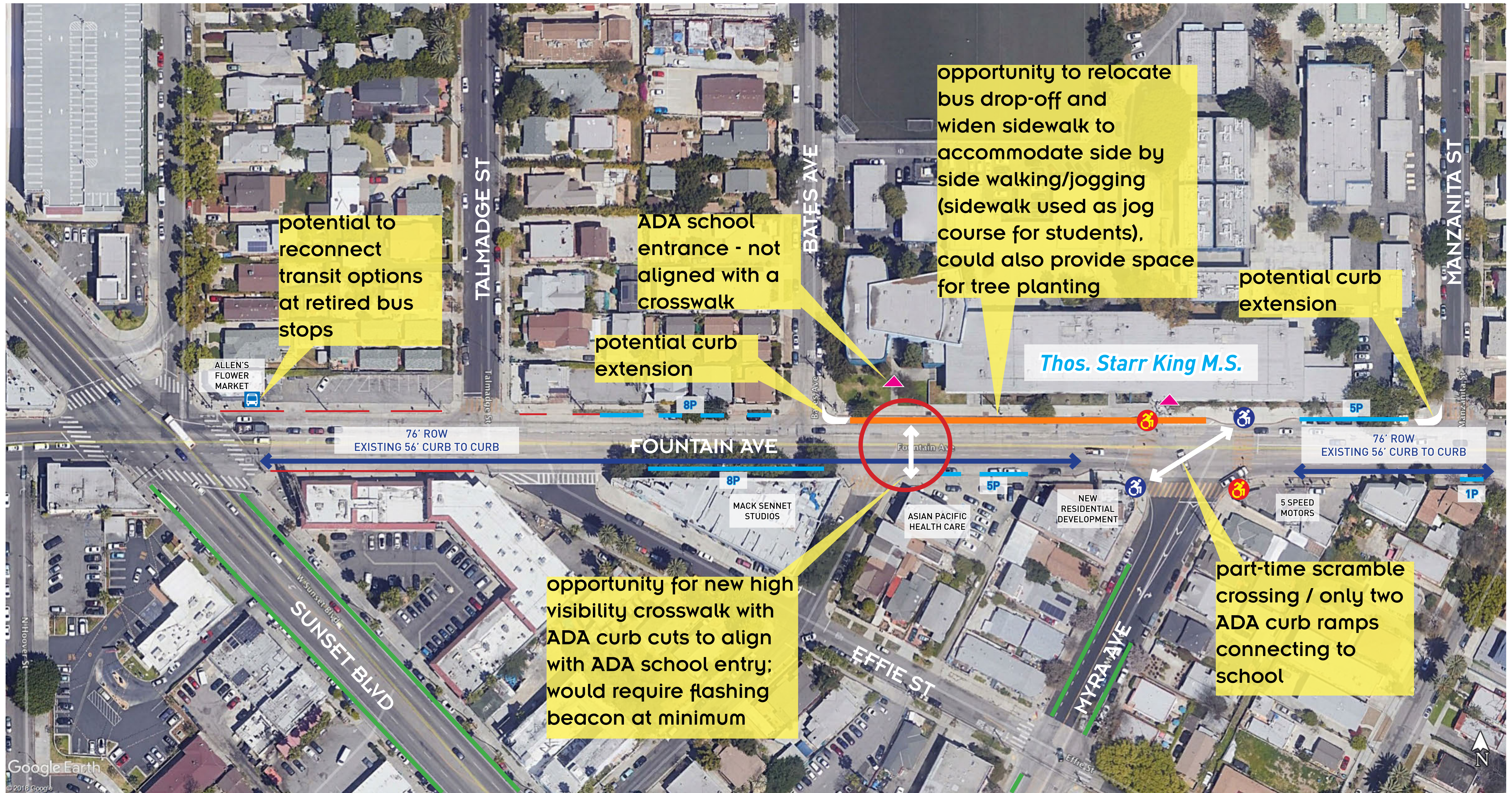
THE AVENUE PLAN - Panel 7



ISSUES & OPPORTUNITIES
Hyperion Street Safety Coalition

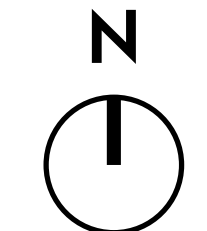
| LEGEND | | | |
|--------|---------------------------|--|--|
| | School Entrance | | ADA curb cut |
| | Retired bus stop/line | | Priority ADA hazard |
| | Traffic Violence | | Potential sidewalk extension |
| | Existing curbside parking | | Yellow curb |
| | Red curb | | Existing bike lane |
| | Safe Crossing Priority | | DESIGNATED ROW WIDTH DESIGNATED ROADWAY WIDTH |

THE AVENUE PLAN - Panel 8



ISSUES & OPPORTUNITIES
Hyperion Street Safety Coalition

| LEGEND | | | |
|--------|------------------------------|--|--|
| | School Entrance | | ADA curb cut |
| | Retired bus stop/line | | Traffic Violence |
| | Potential sidewalk extension | | DESIGNATED ROW WIDTH DESIGNATED ROADWAY WIDTH |
| | Existing curbside parking | | Existing bike lane |
| | Yellow curb | | Safe Crossing Priority |
| | Red curb | | |

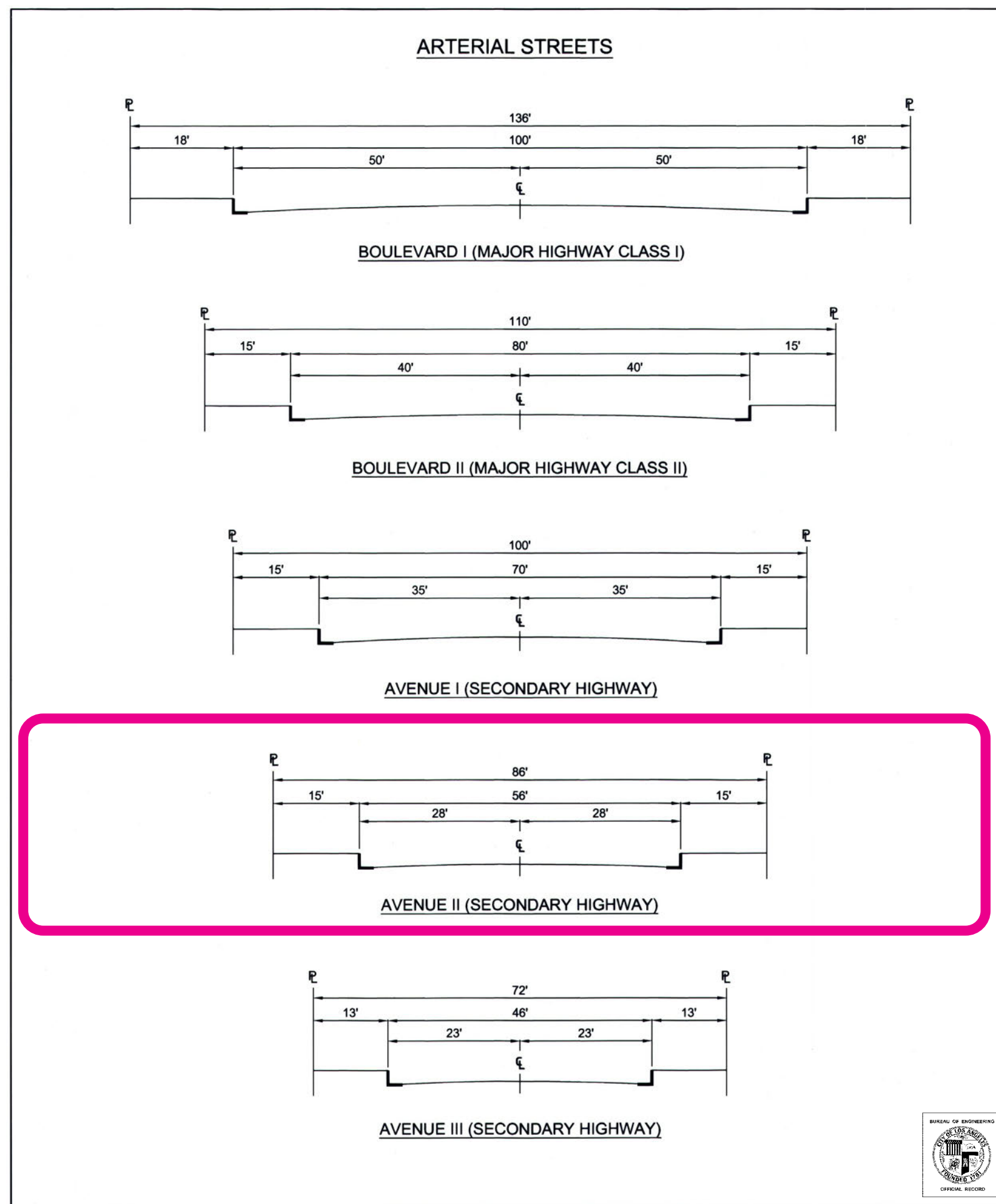


Hyperion & Fountain Avenues are designated as Modified Avenue II (Secondary Highways) per Mobility Plan 2035

Almost 1/2-mile of The Avenue Plan is slated for roadway widening which is antithetical to our Safety Action Plan which asks for dedication to people not cars. Incremental roadway widening can only exacerbate today's issues with vehicular crashes and pedestrian near misses.

BOE calls for the following widths along Hyperion & Fountain:

- 90' ROW / 66' Roadway from Rowena to Entrance (existing 80'/60')
- 80' ROW / 60' Roadway from Entrance to Fountain (existing 80'/60')
- 76' ROW / 56' Roadway from Hyperion/Fountain to Sunset (existing 80'/60')



| BUREAU OF ENGINEERING | | DEPARTMENT OF PUBLIC WORKS | | CITY OF LOS ANGELES | |
|--|---|---|------|----------------------------------|------------|
| STANDARD STREET DIMENSIONS | | | | STANDARD PLAN S-470-1 | |
| PREPARED KITTY SHU, P.E. BUREAU OF ENGINEERING | SUBMITTED 10/13/15 SAMARA ALJAHNAD, P.E. ENGINEER OF DESIGN BUREAU OF ENGINEERING | APPROVED 10-20-15 GARY LEE MOORE, P.E., ENV. SP. CITY ENGINEER | DATE | SUPERSEDES D-22549 S-470-0 | REFERENCES |
| CHECKED RAFFI MASSABKI, P.E. BUREAU OF ENGINEERING | DATE 10/13/15 KENNETH REDD, P.E. DEPUTY CITY ENGINEER | DATE 10-21-15 NICK P. BROWN, P.E. DIRECTOR OF PLANNING | DATE | VAULT INDEX NUMBER: B-4738 | |
| | | | | SHEET 1 OF 4 SHEETS | |

The screenshot shows the NavigateLA interface with a map of Hyperion Avenue. A yellow callout box points to a specific location on the map, stating: "2508 HYPERION AVE (SMALL LOT) FOLLOWED PROTOCOL FOR ~5' DEDICATION IN ~ 2015, THUS WIDENING THE RIGHT-OF-WAY AND THE ROADWAY." Another yellow callout box points to a different location, stating: "HISTORY OF DANGEROUS VEHICULAR STOREFRONT COLLISIONS & UNSAFE PEDESTRIAN CROSSINGS (BODY BUILDERS GYM, CEVICHE PROJECT, CINEMA WELLNESS) ⚠️".

On the right side of the interface, a "Report Window" displays the following data:

| Mobility Plan 2035 | |
|--|-------------------------------|
| Designation | Modified Avenue II |
| Right-of-Way Width (Designated) | 90 FT |
| Roadway Width (Designated) | 66 FT |
| Scenic Highway | No |
| Divided Street | No |
| Maps (Extracted from Mobility Plan 2035) | Circulation Maps A1-A9 |
| Document | Mobility Plan 2035 |
| Document | Complete Streets Design Guide |
| Cadastral Map Number | 150A205 |
| Right Address Range (From) | 2500 |
| Right Address Range (To) | 2598 |
| Right ZIP Code | 90027 |
| Left Address Range (From) | 2501 |
| Left Address Range (To) | 2599 |
| Left ZIP Code | 90027 |
| Other | |
| From | EVANS ST |

WIDENING THE ROW HAS A CLEAR + ACHIEVABLE GOAL OF CREATING MORE SPACE FOR SIDEWALKS, PARKWAYS, AND COMPLETE STREETS AMENITIES.

UNLESS THERE IS A CLEAR + ACHIEVABLE GOAL FOR WIDENING THE ROADWAYS, THE ROADWAY WIDTH DESIGNATION SHOULD BE REMOVED AS A REQUIREMENT FOR DEVELOPMENT.

CURRENT (AND UNNECESSARY) ROADWAY WIDENING POLICY

Hyperion Street Safety Coalition

